

Report Title	EL6243 Annual Community Consultation Report
Report Type	Reduced
Prospecting Title Number	Exploration Licence 6243
Grant Date	21 May 2004
Expiry Date	21 May 2029
Reporting Period	21 May 2024 to 20 May 2025
Project Name/Location	Narrabri South
Project Operator	Narrabri Coal Pty Ltd and others
Titleholder	Narrabri Coal Operations Pty Ltd
Date of Report	15 July 2025
Author & Title	Brent Baker – Manager Environment
Author's Contact Details	WHC – 10 Kurrajong Creek Rd, Baan Baa, NSW, 2390
Email	BrentBaker@whitehavencoal.com.au
Telephone	02 6794 4167

Verification Signature:

A handwritten signature in black ink, appearing to be 'Brent Baker', written over a light blue dotted line.

Executive Summary

EL6243 is located approximately 30 km south of the town of Narrabri, west of the Kamilaroi Highway between the localities of Turrawan and Baan Baa. EL6243 has an area of 6,940 ha and is situated mainly on farmland and State Forest. The licence is located adjacent to and south of the Narrabri Mine (ML1609).

A renewal application was submitted on 17 May 2019 and was granted on 29 September 2023, expiring on 21 May 2029.

Mining lease (ML) 1839 was granted on 13 September 2022 and covers a portion of EL6243.

No on-ground exploration activities occurred during the reporting period.

An application was made to the Resources Regulator for Rehabilitation Completion. Inspectors from Resource Regulator attended site during the reporting period to verify the rehabilitation standard. The application was approved and subsequent reduction in required Security Deposit issued.

There was limited direct engagement with landowners or specific sectors of the community. No, complaints or feedback were received or dealt with during the reporting period. Regular meetings are held with local government and State agencies to discuss various matters regarding exploration activities and compliance issues in the Gunnedah region at a group level.

TABLE OF CONTENTS

1.	Reason for reduced annual community consultation report.....	4
2.	Authority Information.....	4
3.	Location and Access	4
4.	Consultation Completed During Reporting Period	4
4.1	Community Consultative Committee	5
4.2	Engagement with Landowners	5
4.3	Engagement with Community Groups.....	5
4.4	Engagement with Local Councils	5
4.5	Engagement with Government Agencies	5
5.	Outcomes of Consultation and Actions Taken.....	6
6.	Enquiries and Complaints Received During the Reporting Period.....	6
7.	Map	7

1. Reason for reduced annual community consultation report

No exploration activity took place on EL6243 during the reporting period.

2. Authority Information

EL6243 was originally granted on 21 May 2004. The exploration licence is held by a joint venture comprising:

Joint Venture Participant	Interest
Narrabri Coal Pty Ltd (NCPL) (a subsidiary of Whitehaven Coal)	70.0%
Upper Horn Investments (Australia) Pty Ltd	7.5%
Narrabri Coal Australia Pty Limited (a subsidiary of Whitehaven Coal)	7.5%
J-Power Australia Pty Ltd	7.5%
POSCO International Australia Holdings Pty Ltd	5.0%
KORES Narrabri Pty Ltd	2.5%

The company Narrabri Coal Operations Pty Ltd (NCOPL) operates the Narrabri Mine and activities within EL6243 on behalf of the Narrabri joint venture.

On 18 January 2008 an area of 5,298 ha was excised from EL6243 and granted to Narrabri Coal Pty Ltd as Mining Lease (ML) 1609, where an underground longwall mine is now operating. Part of EL6243 overlaps ML1609.

ML1839 was granted on 13 September 2022 and covers a portion of EL6243. This ML relates to the Narrabri Mine Stage 3 Extension Project that was approved on the 24 September 2024 by the Australian Government.

The tenement is in the Narrabri Local Government Area (LGA) and the North West Local Land Services (LLS) area.

3. Location and Access

Exploration Licence EL6243 is located approximately 30 km south of the town of Narrabri and is situated mainly on farmland and State Forest west of the Kamilaroi Highway between the localities of Turrawan and Baan Baa (Figure 1). EL6243 has an area of approximately 6,940 ha and measures approximately 7 km by 16.5 km. The licence is located adjacent (South) to the Narrabri Mine (Mining Lease (ML) 1609). Primary access for exploration is via the Narrabri Mine main access gate.

4. Consultation Completed During Reporting Period

NCOPL via Whitehaven Coal engages with local residents and the broader community in a number of ways:

- The Whitehaven Coal Limited website whitehavencoal.com.au/our-business/documentation has links to:
 - CCC minutes, the complaints register, newsletters and factsheets as well as environmental monitoring, reporting and approvals documentation
 - Newsletters and factsheets
- Participation in local business chambers
- Regular meetings with local councils
- A comprehensive sponsorships and partnerships program.

4.1 Community Consultative Committee

The Narrabri Mine Community Consultative Committee met four times during the reporting period in June, September, December 2024 and March 2025.

The minutes of the meetings can be found at whitehavencoal.com.au/our-business/our-assets/narrabri-mine/

A summary of exploration matters relating to EL6243 discussed in the meeting is provided in table 1, below.

Table 1: Summary of Narrabri Mine CCC minutes (relating to Exploration activities) during the reporting period

Date of CCC Meeting	CCC member	Issue Raised	Narrabri Mine response
19 June 2024	Narrabri Coal Operations and Whitehaven Coal employees	No issues raised relevant to EL 6243	n/a
12 September 2024	Narrabri Coal Operations and Whitehaven Coal employees	- Provided update on Stage 3 project. - Confirmed the Resources Regulator audit for EL6243 was completed in May 2024 and ML1609 August 2024 with no non-compliances or issues raised from these audits.	n/a
4 December 2024	Narrabri Coal Operations and Whitehaven Coal employees	No issues raised relevant to EL 6243	n/a
12 March 2025	Narrabri Coal Operations employee and Whitehaven Coal employees	No issues raised relevant to EL 6243	n/a

4.2 Engagement with Landowners

There was no engagement with landowners (except those in the CCC) regarding exploration during the reporting period.

4.3 Engagement with Community Groups

Specific community groups were not engaged with during the year regarding exploration.

4.4 Engagement with Local Councils

A regular meeting is held with each of the Narrabri, Gunnedah and Liverpool Plains Shire Councils to discuss mining and approvals (and sometimes exploration) related matters in the Gunnedah and Narrabri region.

The Gunnedah Shire Council and Narrabri Shire Council were not engaged during the year specifically regarding exploration on this tenement.

4.5 Engagement with Government Agencies

An application was made to the Resources Regulator for Rehabilitation Completion. Inspectors from Resource Regulator attended site during the reporting period to verify the rehabilitation standard. The application was approved and subsequent reduction in required Security Deposit issued.

The Department of Regional NSW, the NSW Resource Regulator, NSW Department of Planning, Housing and Infrastructure (DPHI) (formerly NSW Department of Planning and Environment), and NSW Environment Protection

Authority (EPA) were engaged to discuss various matters regarding exploration activities and compliance issues at a group level, but not specifically about EL6243.

5. Outcomes of Consultation and Actions Taken

No issues have been raised.

NCO has kept the CCC members regarding other matters relating to EL6243.

6. Enquiries and Complaints Received During the Reporting Period

There were no community complaints or feedback relating to exploration over the reporting period for EL6243.

7. Map

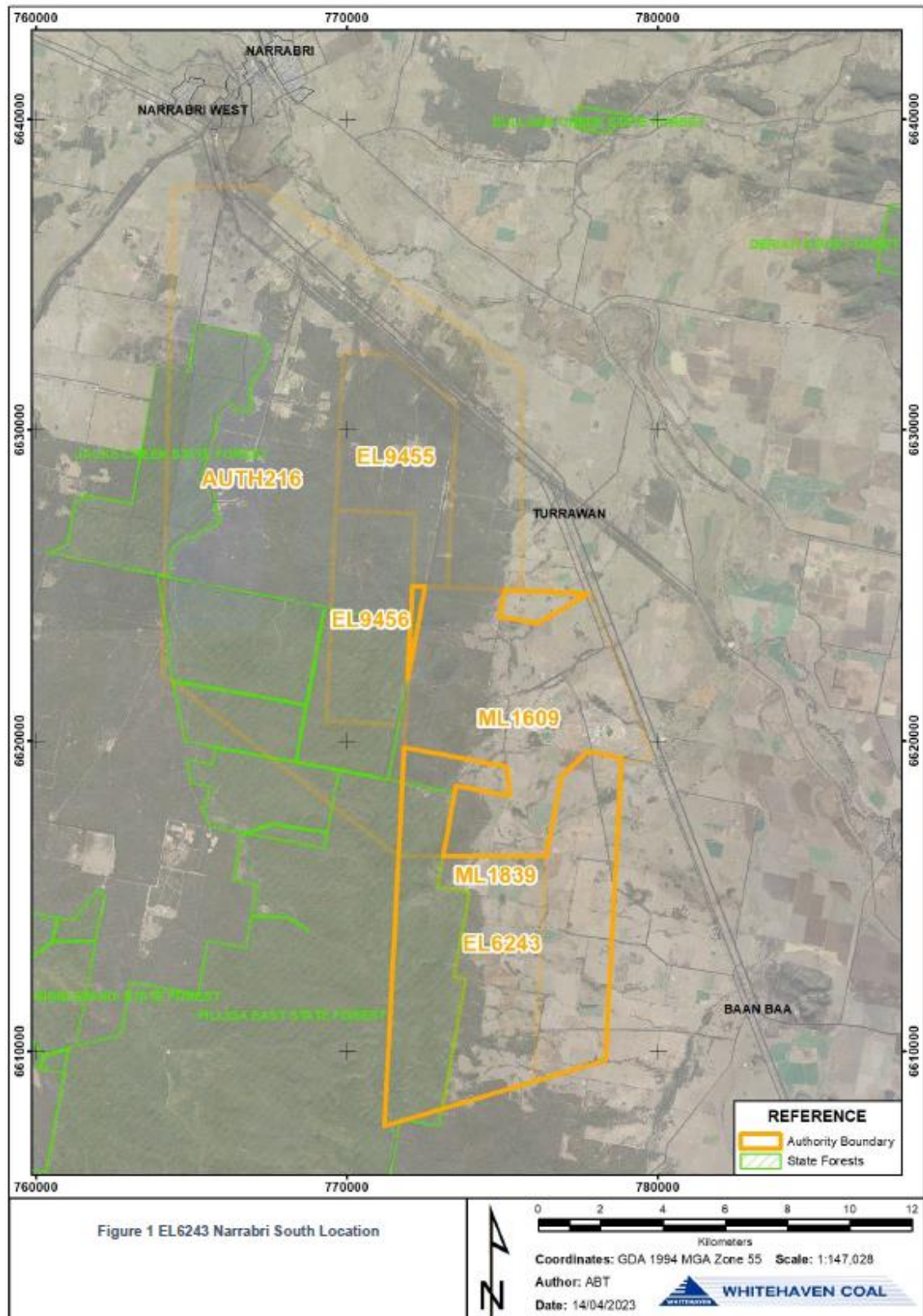


Figure 1: EL6243 regional location map.